



Technical data sheet

PROTECTION MADE EASY

Mixtane Roller



Description and destination of the product

Mixtane Roller is a two-pack acrylic performing polyurethane for roller applications.

Mixtane Roller is available in high gloss, high satin, satin and low satin. The mat version is not available.

Mixtane Roller stands out thanks to the following high quality properties:

- very high outdoor resistance
- very good gloss- and colour retention
- very good thermal stability
- very good chemical resistance
- high hardness, elasticity and abrasion resistance
- adjusted for roller application (and brush application on smaller pieces)

Mixtane Roller is therefore the ideal finishing coat for roller applications (when the high quality properties mentioned above must be obtained) on machines, floors (lineation, marked zones), tearplates on floors, ...

Mixtane Roller can be used as finishing coat on powder coatings.

- Good adherence can be obtained on wax free epoxy-, epoxypolyester- and polyester powders from the type Oxyplast. Conditions to obtain a good adherence on such powders are:
 - a clean surface
 - a correctly cured powder surface.Impurities should be removed with a suitable degreasing or dusting depending on the nature of the contamination. Precipitates of smoke gasses on the baked powder can also result into adherence problems.
- After cleaning sand the surface thoroughly with Scotch-brite and etch with **Powdersoft** before applying **Mixtane**

Type of binder

Polyurethane polymer consisting of an hydroxyacrylate resin and a polyfunctional aliphatic polyisocyanate.

Type of pigment

Light stable organic or inorganic colour pigments.

Colour

All RAL-shades are standard available with the exception of luminescent and metal paints. Other colours can be obtained on request.

Gloss

Glossy, high satin, satin and low satin.

Technical data

- **Density:** 1.10 ± 0.1
- **Solids content:** 47 ± 2 % in volume
- **Mixing ratio:** **See table**
Mixing errors result in deviating properties and differences in gloss. Therefore we advise to mix the complete contents of base paint and hardener.
- **Potlife:** ± 4 hours (at 20°C)
- **Drying times:**
(20°C- 40 micron)

dustdry	:	After 15 minutes
tackfree	:	After 3 hours
Dry	:	After 12 hours
Fully cured	:	After 7 days
- **Repaintable:** after 16 hours (20°C)
Recoatable without sanding of the previous layer: maximum 48 hours
- **VOC:** < 480 g/L (ready for use)
- **Theoretical yield:** 6-8 m²/kg (50-60 µm dry layer thickness, depending on the colour)
The practical yield can largely be influenced by the roughness and porosity of the substrate, the applied layer thickness or the losses by airless application.

Surface preparation

For optimal adhesion on steel, aluminium, galvanised steel, first apply **Cryltane DTS 20** or **Cryltane AC VHA 006** (Use: see technical data sheet).

For application on floors (tearplates, lineation, marked zones...): use see flow chart "**Mixtane Roller on floors**".

Use

Clean material with **Solvatane**.

Mixtane Roller can perfectly be applied in one or two layers, depending on the surface (porosity and colour), by roller or brush. **Mixtane Roller** is ready for use. The minimum waiting time between two layers is 12 hours. When the waiting time between two layers is longer than 48 hours, it is necessary to sand between layers to ensure the adhesion between layers.

OVERVIEW MIXING RATIO (in weight)

High gloss	(> 90 % (60° Gn))	4/1 BN4
High satin	(85 ± 5 % (60° Gn))	4/1 BN4
Satin	(70 ± 5 % (60° Gn))	3/2 BNK4
Low satin	(50 ± 10 % (60°Gn))	3/2 BNK4

Application conditions

The relative humidity must be maximum 85 %. During application, the temperature of the surface must be minimum 8°C and 3°C higher than dew point. The temperature and relative humidity should always be measured as closely as possible to the object to be painted.

Storage stability

For the base paint: minimum 2 years in the original, unopened packing, stored in a dry environment at temperatures between -10°C up to +40°C.

For the hardener: minimum 18 months in the original, unopened packing, stored in a dry environment at temperatures between -10°C up to +40°C.

Safety measure

For detailed information about safety measures, personal protection and transport data of this product, we refer to the safety data sheet.

The last update of our technical data sheets is always available at our website: www.libertpaints.com

Disclaimer

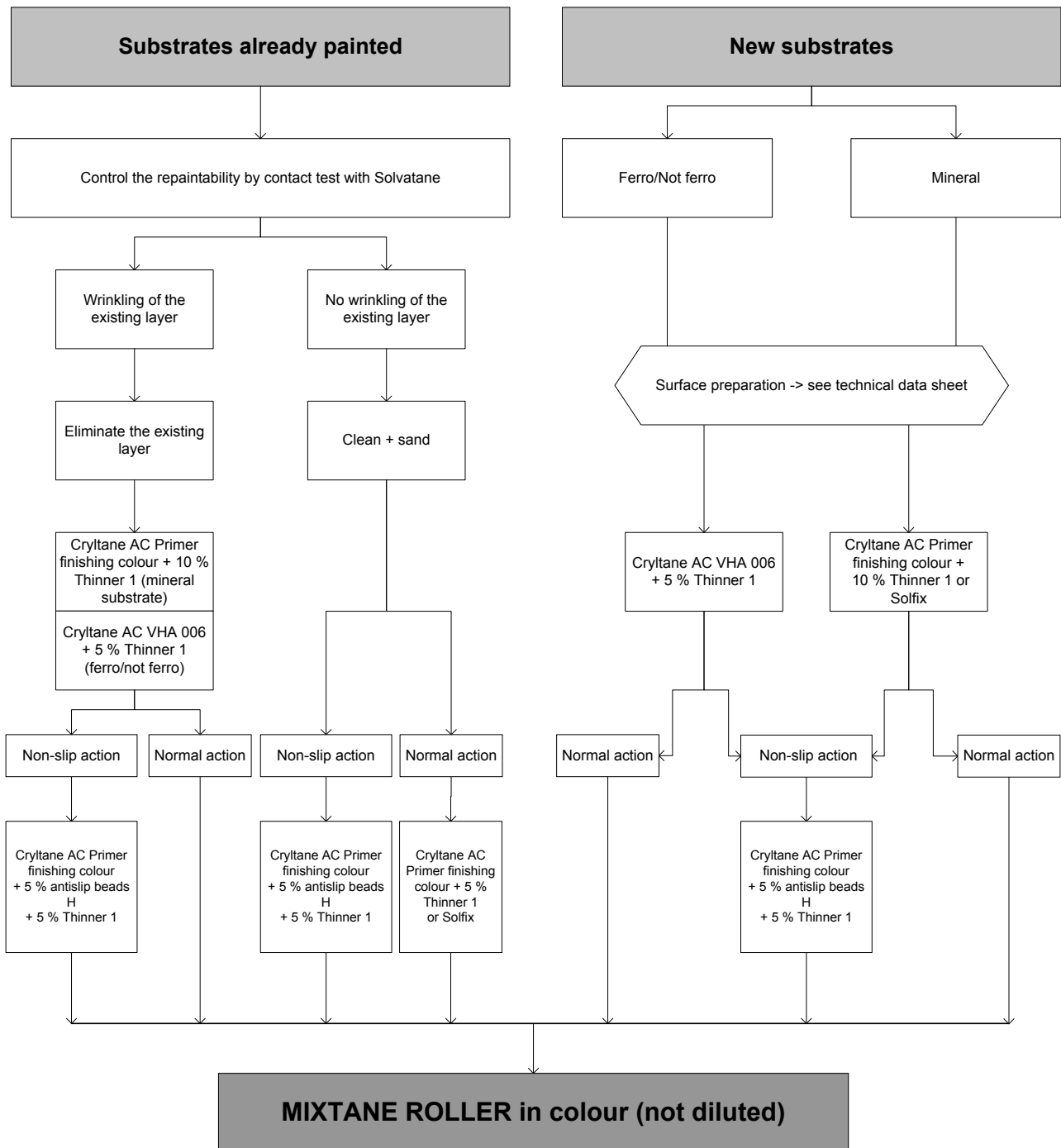
The information given in this technical data sheet is only a general product description, based on our experiences and tests and therefore does not represent a specific practical case. Consequently Libert Paints doesn't guarantee the functionality or result and takes no responsibility in this respect.

We advise our clients to test the applicability of the product to the nature and the state of the surfaces and to carry out the necessary representative tests in case of doubt. Please contact our R&D department as the occasion arises.

Attention: our clients should verify whether the present technical data sheet hasn't been replaced by a more recent version.

Flow chart - Use of MIXTANE ROLLER for floors (mineral/ferro/non ferro)

Target : paint for lineations (lineations, corridors, marked zones) on new floors or old mineral/ferro and not ferro floors already painted (ex. Tearplates on floors) with a high quality two-pack paint



REMARK : dosage of antislip beads : 175 ml for 1 L of Cryltane AC Primer (= 5 % in weight)